

beacon
health options

Autism Spectrum Disorder Services

CBHOC Presentation
January 8, 2016



Status Update on Autism Spectrum Disorder Services, CT

Where We Started

- The publication of the July 2014 CMS Bulletin requires States to cover behavioral treatment services for Medicaid beneficiaries with Autism Spectrum Disorder (ASD)
- The CT Behavioral Health Partnership (CTBHP), the partnership among:
 - Department of Social Services (DSS),
 - Department of Children and Families (DCF),
 - Department of Mental Health and Addictions Services (DMHAS)
 - ValueOptions (VO), is the Administrative Service Organization
 - Department of Developmental Services (DDS) worked closely with us to be prepared to authorize behavioral treatment services as of January 1, 2015.

“Using the prevalence rate and the 2011 United States Census estimates for the number of youth 18 years or younger, the estimated number of Connecticut youth with ASD is approximately 9,143 (based on US Census Bureau, 2011 count of 802,079 youth in CT <18 years old). ”

Connecticut Plan for ASD Services

- Two main components of the Plan:
 1. Behavioral treatment services
 - such as Applied Behavior Analysis (ABA)
 - Available to children and youth with Medicaid under the age of 21
 - May not overlap with or take the place of services available through the school
 2. Peer Specialist and Care Coordinator services
 - Available to individuals of any age who have ASD and their families
 - May be utilized to help guide families through accessing Autism services
 - May be utilized to gain access to other community services such as therapeutic recreation, social skills groups, or other referrals

ASD Services Team

- The Team consists of:
 - One Program Director
 - 3 Care Managers
 - 4 Peer Specialists
 - 4 Care Coordinators
 - One Customer Service staff member
- Phone system offers early option to be directed to a member of the team.
- Dedicated fax securely sends information and documents directly to the team.

Who Is Eligible?

- For behavioral treatment services-
- An Autism Spectrum Disorder (ASD) Diagnosis
 - Pervasive Developmental Disorder, NOS
 - Asperger's Syndrome
 - Autism
- Members should be in the care of a Physician (PCP) /Pediatrician who supports the ASD diagnosis
- HUSKY A, C, and D members under the age of 21 with an ASD diagnosis are eligible for ASD evaluation, behavior assessment and treatment services
- HUSKY B members are not eligible at this time

Who Is Eligible?

- For Peer Specialist or Care Coordinator services-
- Individuals of any age with an ASD diagnosis can access Peer and Care Coordinator services
 - May be utilized to help families access ASD services
 - May be utilized to access community services, social skills groups, or other referrals
 - May be utilized to assist in navigating the system

What Is Covered?

- Behavioral Treatment Services:



How We Communicated



5 Community Meetings

Parent Supports Groups

Special Education PTAs

DCF & DDS Regional Staff

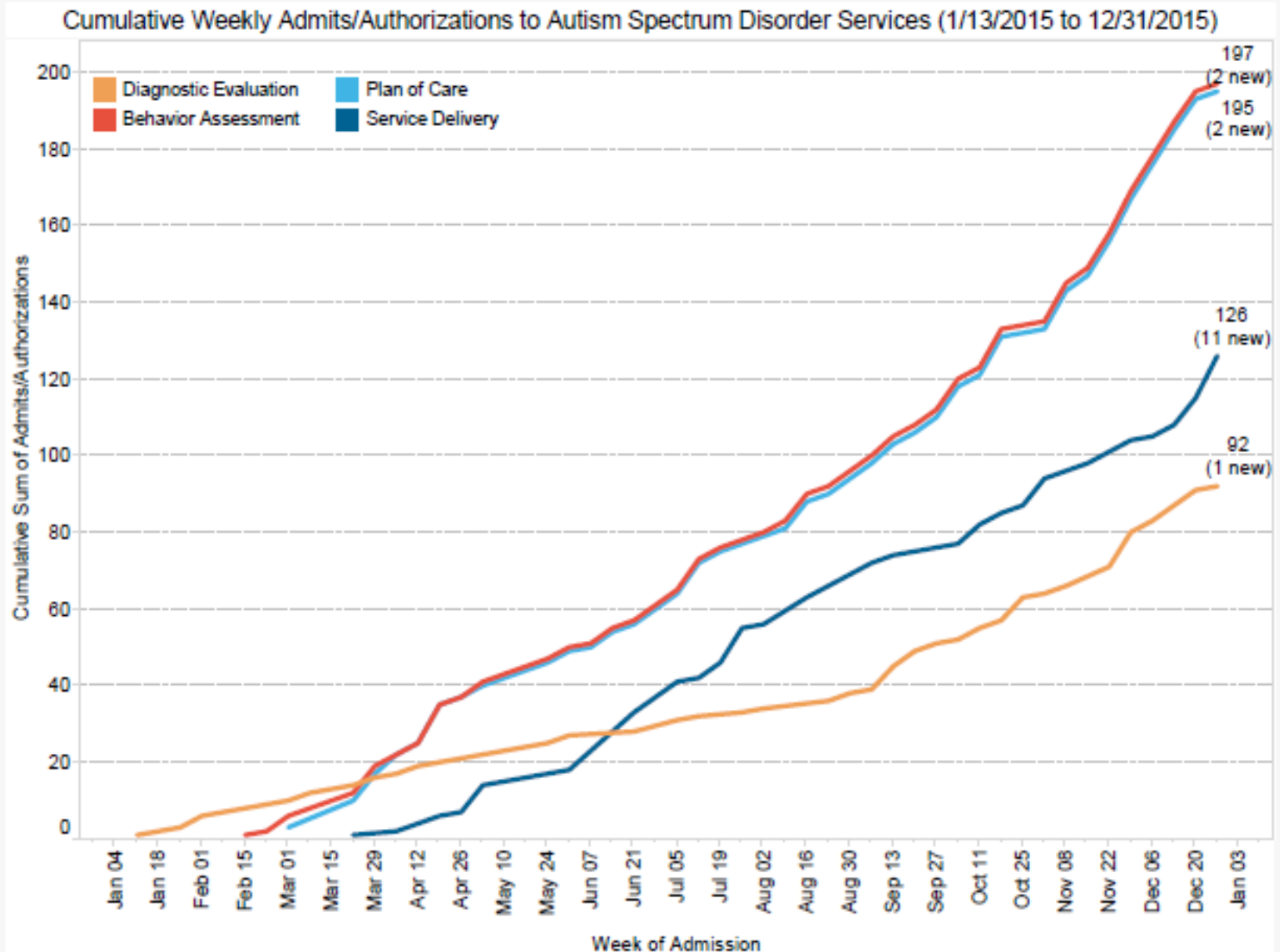
Advisory & Oversight Committees

What's Been Done So Far

PG 1

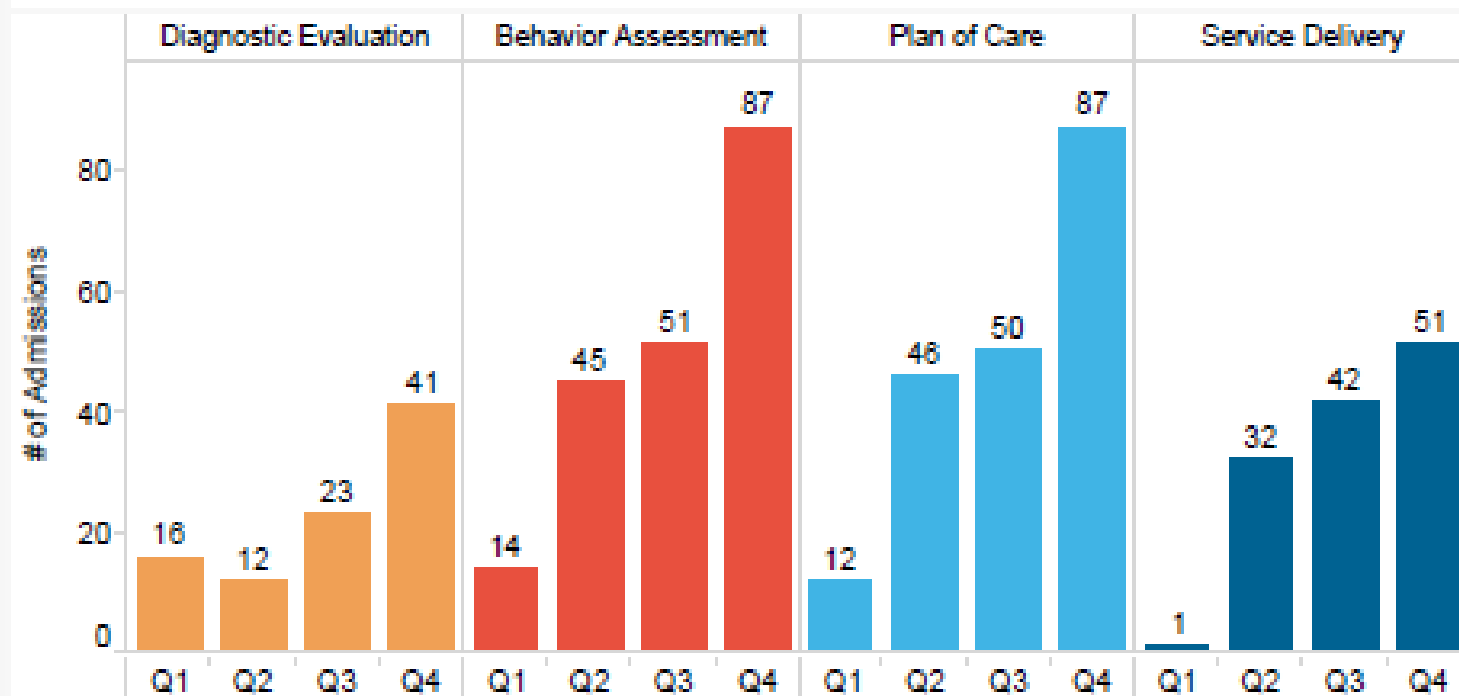
Medicaid Youth (Ages 0-20) Autism Spectrum Disorder Services Weekly Admissions Report

Since program inception through last full week reported: Week starting 12/27/2015



What's Been Done So Far

Quarterly Admits/Authorizations for Autism Spectrum Disorder Services by Service Class

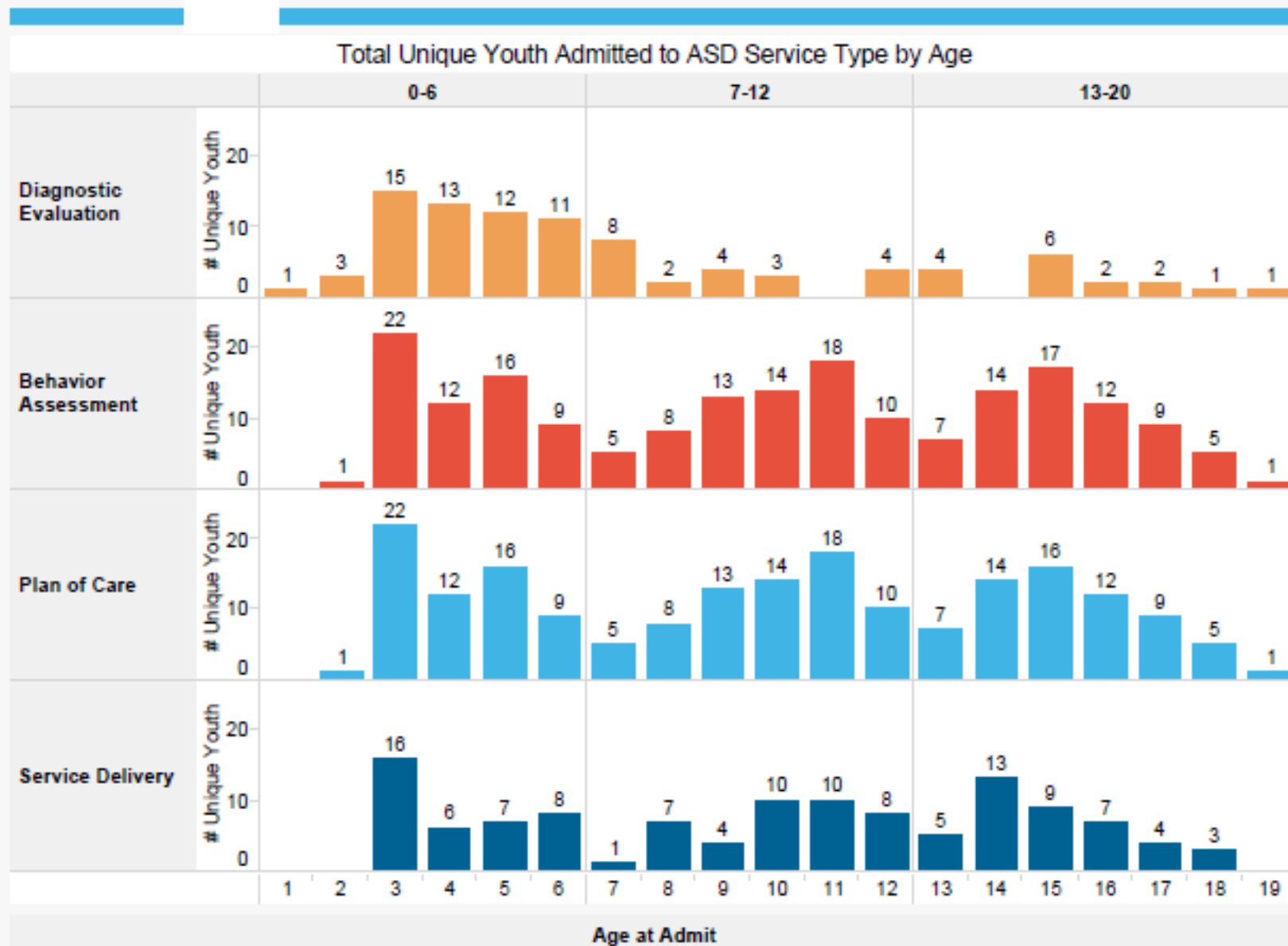


What's Been Done So Far

PG 2

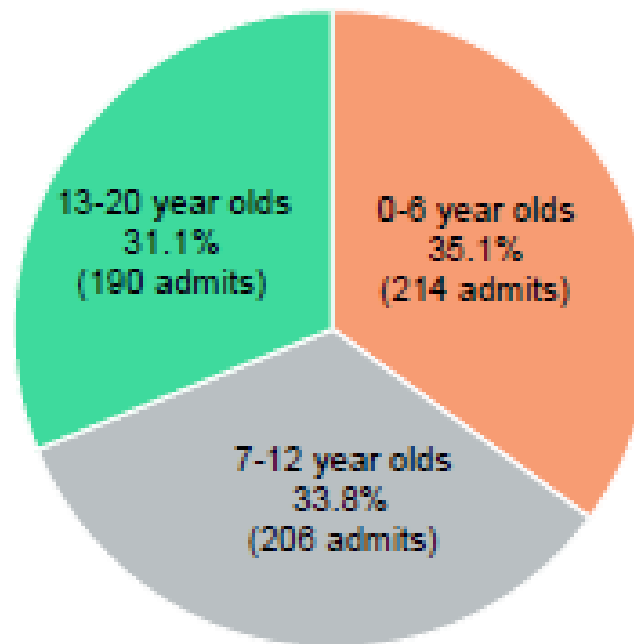
Medicaid Youth (Ages 0-20) Autism Spectrum Disorder Services Weekly Admissions Report

Since program inception through last full week reported: Week starting 12/27/2015



What's Been Done So Far

Total Admits/Authorizations Obtained for Each Age Group (All Service Classes)



What's Been Done So Far

PG 3

Medicaid Youth (Ages 0-20) Autism Spectrum Disorder Services Weekly Demographics Report

Since program inception through last full week reported: Week starting 12/27/2015

From 1/13/2015 through 12/31/2015
285 unique youth
have obtained authorizations for ASD
services.*

Of which
113 youth
were ages 0-6 at
admission.

Of which
90 youth
were ages 7-12 at
admission.

Of which
83 youth
were ages 13-20 at
admission.

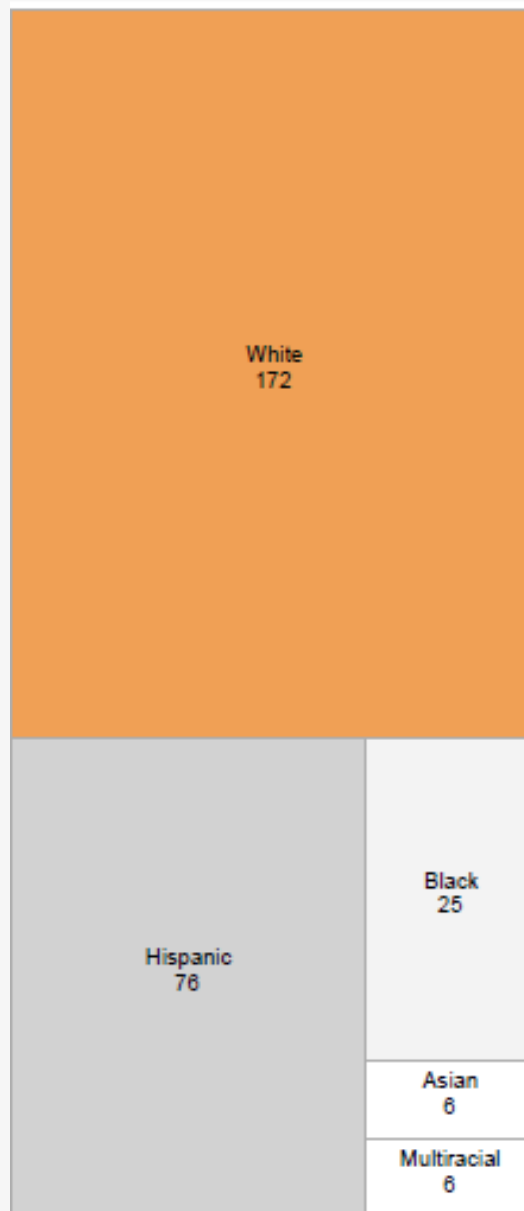


Note: *Total unique youth is based on unique CT Medicaid ID. Total unique youth in each age group may not add up to the total unique youth as a child may start services (receive an authorization) in one service class at one age and then receive an authorization for another service class at a later date and a different age. That youth will be counted in two age groups as the data is based on authorizations. **DCF status is captured at admit. One youth may have multiple services and a different DCF status or regional assignment at each admission. Therefore, total table counts may be greater than the actual count of unique youth.

What's Been Done So Far



Total Unique Youth Authorized for ASD Services by Race/Ethnicity



What's Been Done So Far

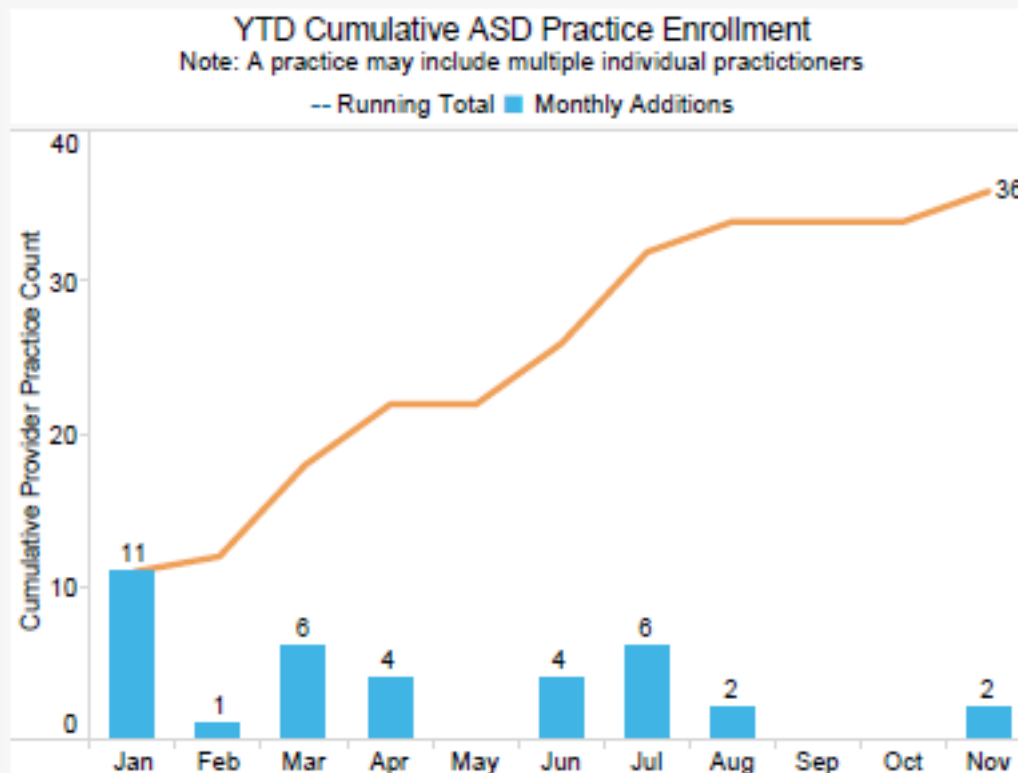
PG 5 Provider Enrollment for Autism Spectrum Disorder Services Since Program Inception on 1/1/15

62

individual providers have enrolled in Medicaid to provide ASD services.

36

unique practices (individuals or groups) have enrolled in Medicaid to provide ASD services.



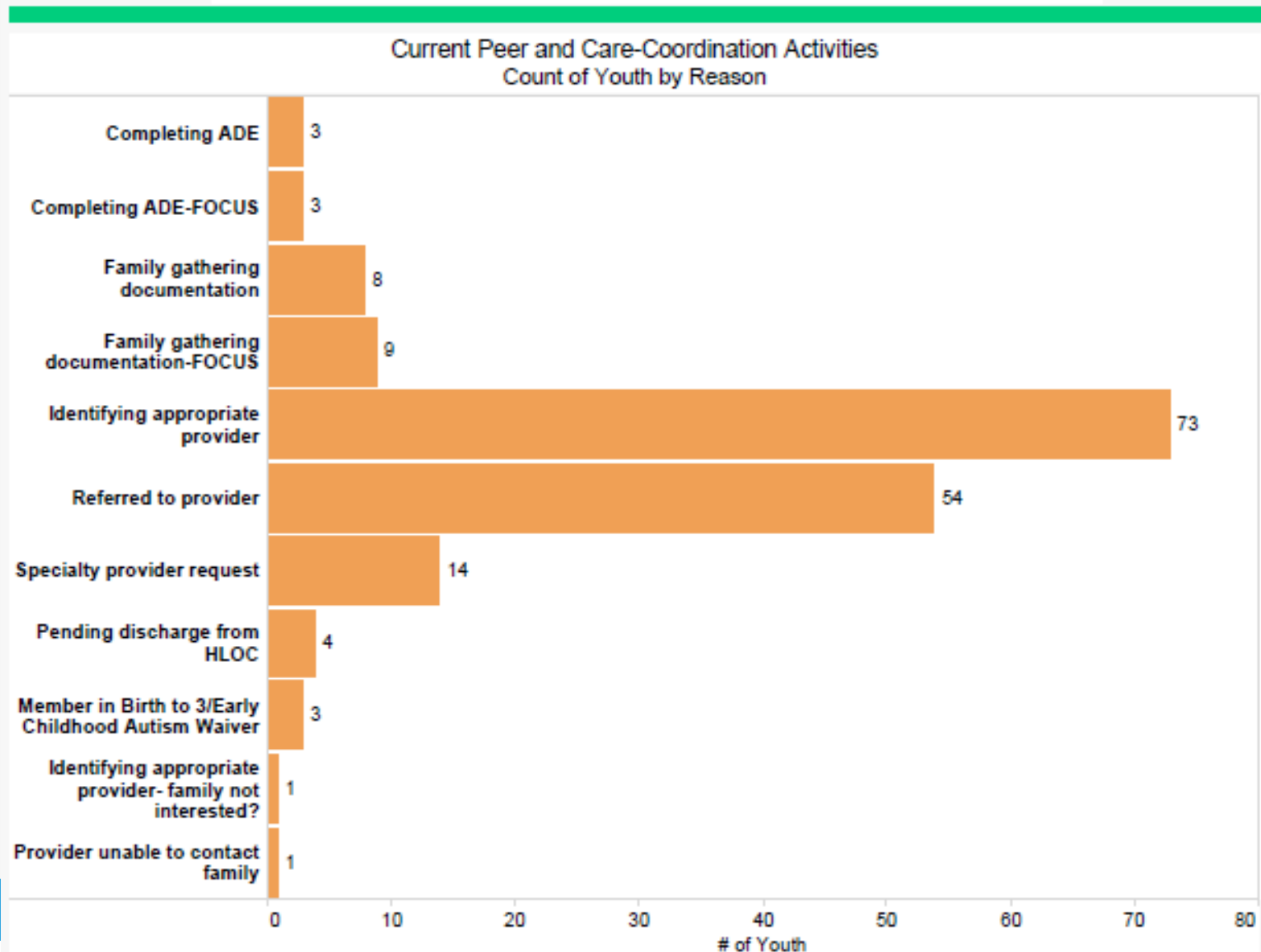
What's Been Done So Far

PG 4

Medicaid Youth (Ages 0-20) Autism Spectrum Disorder Services

Weekly Peer/Care Coordination Report

Since program inception through last full week reported: Week starting 12/27/2015



Provider Network

- ValueOptions has also been working hard to develop a provider network list.
- As this is a new service that Medicaid is offering the overall provider system will continue to grow:
 - Providers are joining the Medicaid network.
 - Providers are determining the services they will be offering from the diagnostic assessment to direct intervention.
 - ValueOptions is identifying and outreaching to providers to develop the network and facilitate referrals.

Peer Specialist and Care Coordinator Roles

- Contact with families within 24 hours of referral.
- Will include home or community visits within 72 hours of initial contact.
- Will involve connecting youth, families and adults with resources in the communities.
- Will involve interacting with agencies to develop and maintain relationships with those who provide community services.
 - Attend regional Community Collaboratives, DCF and DDS Meetings.
- Will involve maintaining our resource list and developing familiarity with services to find appropriate services for our members.

Peers Specialist and Care Coordinator Roles

- Helping families connect with:
 - Housing and food assistance
 - Assistance with utility bills
 - Parent Support
 - Educational Advocates
 - Applying for DDS or DCF Voluntary Services
 - Pet therapy
 - OT, Speech and PT services
 - Social skills groups and play groups
 - Dental care
 - Tickets to events
 - Help with scheduling appointments
 - Connection with Transition Services

What Else We're Getting Ready To Do

- CT ABA Conference
- RI ABA Conference
- NY ABA Conference
- ASD Provider Work Groups and Learning Collaboratives
- Updates to DCF/DDS Regional Staff
- Updates to Community Collaboratives
- ASRC Conference March 2016
- Sponsor for the Connecticut Autism Action Coalition (CAAC)
Autism Awareness Contest – April 2016

“There needs to be a lot more emphasis on what a child with autism can do and not on what he can't do”

-Temple Grandin

How to Access Services

- **CT Behavioral Health Partnership:**

- Phone: 1-877-552-8247 Fax: 1-855-901-2493

- **Websites:**

- CT Behavioral Health Partnership: www.ctbhp.com
 - Department of Developmental Services: <http://www.ct.gov/dds>
 - Department of Social Services: <http://www.ct.gov/dss>
 - Department of Children & Families: <http://www.ct.gov/dcf>

Thank you